

Interactive DLA Map Catalog Quick Start Guide

by

PARTNET

on November 2, 2023

Revision History

Revision Date	Author	Summary of Changes
11 / 2 / 2023	Tiffany Hayes	Update Formatting
4 / 17 / 2024	John Carrithers	Update Formatting and Content

Table of Contents

1. What is the New Interactive DLA Map Catalog?	4
2. Navigating to the New Interactive DLA Map Catalog	4
2.1 Logging In to FedMall.....	4
2.2 Accessing the Map Catalog	4
3. Using the New Interactive DLA Map Catalog.....	5
3.1 Features of the Map Catalog	5
4. NSN Upload.....	7
4.1 How to Upload an NSN.....	7
5. Search Results Table.....	8
6. Selecting and Adding NSNs to Cart.....	9

1. What is the Interactive DLA Map Catalog?

The Interactive Defense Logistics Agency (DLA) Map Catalog is a specialty tool that uses a Graphic User Interface (GUI) to allow users to locate and select aeronautical, digital, hydrographic, topographic, or US Geological Survey (USGS) map products and add them to the shopping cart.

2. Navigating to the Interactive DLA Map Catalog

To use the Interactive DLA Map Catalog, the user needs to log into the FedMall commerce storefront, navigate to the Tools drop down on the left-side of the navbar, and select DLA Interactive Map Catalog from the list of options.

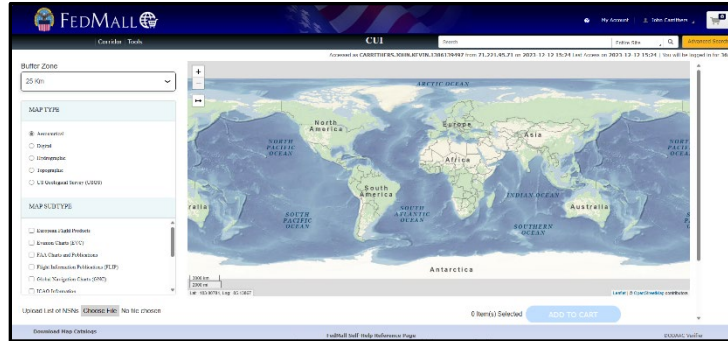
2.1 Logging in to FedMall

Access FedMall by visiting <https://www.fedmall.mil>, and log in using a Common Access Card (CAC), Personal Identify Verification (PIV) card, or soft certificate. For more details about registering in FedMall, including requesting specific additional permissions to use various Custom Utilities, see the Customer Registration Quick Start Guide.

2.2 Accessing the Map Catalog



Map Catalog Location



Map Catalog Landing Page

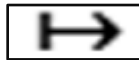
3. Using the Interactive DLA Map Catalog

3.1 Features of the Map Catalog

Map Type and Map Subtype: Map Type selection allows the user to choose from aeronautical, digital, hydrographic, topographic, or US Geological Survey. For each Map Type, there are multiple Map Subtypes to choose from depending on the needs of the user. The user may select **ONLY** one Map Type at a time. However, they can select one or more Map Subtypes. Users are required to select at least one Map Subtype for the map tools to populate.

Buffer Zone: The Buffer Zone allows the user to create a buffer area around Polylines drawn on the map. A drop-down menu allows the user to select a 25km, 50km, 100km, or 200km buffer Zone. All NSNs inside the zone will be populated in the search results table below.

Polyline Measure Tool: The Polyline Measure Tool allows the user to find the actual ground distance between two points on a line drawn on the map display. Distance is measured in Kilometers (km).



Polyline Measure Tool

Pin Tool: The Pin tool allows the user to locate products for a specific point(s) on the map display based on the selected Map Subtype(s). As a result, wherever the user places a pin on the map display, the catalog application will pull the map data from that spot for the selected Map Subtype(s).



Pin Tool

Rectangle Tool: The Rectangle Tool allows the user to draw a rectangle(s) on the map highlighting a specific area. All map products for selected Map Subtypes within or touching the drawn rectangle(s) will populate in the search results table at the bottom of the page.



Rectangle Tool

Polyline Tool: The Polyline tool is a basic line segment tool that incorporates the Buffer Zone at a radius(km) selected by the user. Any map products found within or touching the zone of this line, will populate the search results table.



Polyline Tool

Polygon Tool: The Polygon tool allows the user to create polygons or irregular shapes. Users must place the first vertex, then place additional vertices as desired. Click the first vertex again to close and finish the shape.



Polygon Tool

Remove Layer Tool: The Remove Layer tool allows the user to remove any previously drawn point, shape, or line using the graphical tools. This tool will also clear any related map products from the results table once the object is removed.



Remove Layer Tool

4. NSN Upload

NSN upload allows the user to upload a list of NSNs to populate the Search Results table without making any selections on the map. These uploaded NSNs can then be selected and added to the shopping cart.



NSN Upload

4.1 How to Upload an NSN

The user must click the “Choose File” button located on the top left of the Search Results Table and select an .xlsx file containing the NSNs they desire to upload. The uploaded NSNs will then either fail or succeed. The user can view the successfully uploaded NSNs in the Search Results table while a list of the failed ones can be downloaded for review.



NSN Failed/Succeeded Message

NOTE: User can use the below screenshot for reference to the .xlsx file.

	A
1	7644016938119
2	7644016938120
3	7644016938333
4	7644016938456
5	

.xlsx Reference

5. Search Results Table

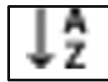
The Search Results Table is populated with all the map products from the user's actions on the map. It can also store uploaded NSNs, giving the user quicker access if the NSN is already known. *The following will break down the functionality of the table:*

Magnifying Glass: The Magnifying Glass allows the user to filter a column by what is specified inside the heading (i.e., NSN, Title, Edition date, etc.).



Magnifying Glass

Sort Button: The Sort Button gives users the ability to sort either by "ascending or descending" alphabetical or numerical order, depending on the column.



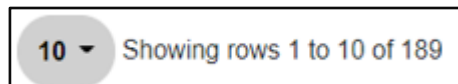
Sort Button

Quantity: The quantity column allows users to change the amount of a selected map product to be ordered. Clicking in the "quantity" field will create a text box for user inputs.

QUANTITY	NSN	NRN
<input type="text"/>	7643015016837	K922XALLADHIQ13

Quantity

Results Drop Down: The user can use the Drop-down menu at the bottom left of the page to filter how many results display per page. The user can choose from 10, 25, 50, or All.



Results Drop Down

Pagination: The user can click the blue numbered pagination at the bottom of the screen to change pages. By clicking the single arrow, the user can move a single page. Clicking the double-arrow will bring the user to the very first or last page.



Pagination

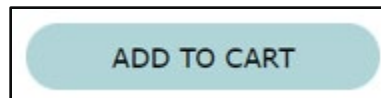
6. Selecting and Adding NSNs to Cart

Selecting NSNs: The user can select the NSNs in the Search Results by clicking on the checkbox in the first column of the table. It will check the box indicating that the NSN in the corresponding row is selected, as seen in the screen capture below.



Check Box

Add to Cart Button: The user can click the “Add to Cart” Button to add the selected NSNs to their Commerce Cart located in the right corner of the user’s screen.



Add to Cart Button